

PINNACLE
S Y S T E M S , I N C.

Stack Lights



Model PTE \varnothing 56mm LED Modular Style Steady & Flashing with Buzzer Option

Stack Lights



- LED modular components
- Bright & even light distribution through prism-cut lenses
- Fast & easy assembly with inter-locking construction
- 3 base body options
- Optional 85dB Buzzer (fixed or adjustable volume)
- NEMA 4x / IP65 rated
- RoHS compliant



Order Information

Optional Orders

PTE - **A** **F** - **3** **02** - **RYGBC**

① ② ③ ④ ⑤ ⑥

① Top Head Style	PTE	Standard
	PTD	Dome Head
② Body Unit Mounting / Connection	A	Pole Mounting/ Lead Wires
	S	Surface Mounting / Lead Wires
	TP	Pole Mounting/ Terminal Connection
	TC	Surface Mounting/ Terminal Connection
③ Light Style		Steady Light
	F	Steady & Flashing Light
④ Number of Stacks	1	1 Light
	2	2 Lights
	3	3 Lights
	4	4 Lights
	5	5 Lights
⑤ Power Supply	02	DC/AC 24V
	FF	AC 90~240V
⑥ Lens Colors (top to bottom)	R	Red
	Y	Yellow
	G	Green
	B	Blue
	C	Clear

Body Units

Body Type	Voltage	Part Number		
		Steady	Steady & Flashing	
Lead Wire Connection	Pole Mounting	AC 90~240V	PTE-A-FF	PTE-AF-FF
		DC/AC 24V	PTE-A-02	PTE-AF-02
	Surface Mounting	AC 90~240V	PTE-S-FF	PTE-SF-FF
		DC/AC 24V	PTE-S-02	PTE-SF-02
Terminal Connection	Pole Mounting	AC 90~240V	—	PTE-TP-FF
		DC/AC 24V	—	PTE-TP-02
	Surface Mounting	AC 90~240V	—	PTE-TC-FF
		DC/AC 24V	—	PTE-TC-02

LED Modules

LED Color	Part Number	
	Standard Module	Dome Head Module
RED	PTE-02-R	PTD-02-R
Yellow	PTE-02-Y	PTD-02-Y
Green	PTE-02-G	PTD-02-G
Blue	PTE-02-B	PTD-02-B
*Clear	PTE-02-C	PTD-02-C

*Clear Module cannot be used with Buzzer.

Locking Bolts

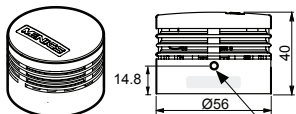
Number of LED Stacks	Part Number	Size
1 Stack	B-PTE-1	M4, 65mm
2 Stacks	B-PTE-2	M4, 105mm
3 Stacks	B-PTE-3	M4, 145mm
4 Stacks	B-PTE-4	M4, 185mm
5 Stacks	B-PTE-5	M4, 225mm

*Note: Do NOT count Buzzer as a stack.

Buzzer Kits (Optional)

Buzzer Style	Part Number
Fixed Sound Level	MPZ-56F
Adjustable Sound Level	MPZ-56G

*Note: Max. number of tier including Buzzer is 5.



Sound Level Adjuster



Specifications

Body Units

Operation/Function	Steady/ Flashing	
Power Supply	AC/DC 24V (±10%)	AC 90~240V 50/60 Hz (±10%)
Buzzer Sound Level	Fixed: 85dB Adjustable: 10~85dB	
Lens Color	Red, Yellow, Green, Blue & Clear	
Lens Diameter	56 mm (2.2 inch)	
Maximum Tier	5	
Flash Rate	80 times/ minute	
Vibration	3mm at 10~55Hz	
Ambient Temperature	-15°C~40°C	
Storage Temperature	-40°C ~ 70°C	
Ambient Humidity	45~85% RH	
Degree of Protection	NEMA 4x, IP65 / IP50 (with Buzzer)	
Approvals	CE , UL, RoHS	
Recommended Wire Size	1007 UL / 22 AWG	

LED Modules

		Red	Yellow	Green	Blue	Clear
Current / Power	Standard Module	27mA / 0.65W		35mA / 0.84W		
	Dome Head Module	58mA / 2.64W	52mA / 1.25W	53mA / 1.27W		
Weight		Standard Module: 42.8g		Dome Head Module: 53g		

Buzzer Kits

Model	MPZ-56F	MPZ-56G
Style	Fixed Sound Level	Adjustable Sound Level
Sound Level	85 dB	10~85 dB
Current Consumption / Power	30mA / 0.72W	30mA / 0.72W
Weight	32.2g	33g

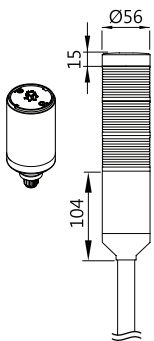
Dimensions

unit: mm

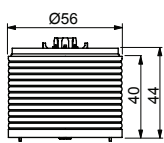
Lead Wire Connection

Pole Mounting

PTE-A-□□
PTE-AF-□□

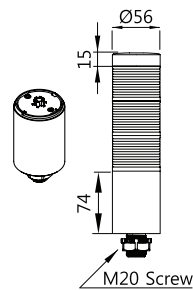


Standard Modules



Surface Mounting

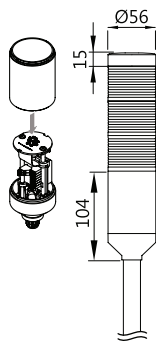
PTE-S-□□
PTE-SF-□□



Terminal Connection

Pole Mounting

PTE-TP-□□

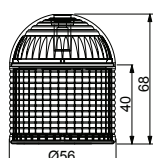
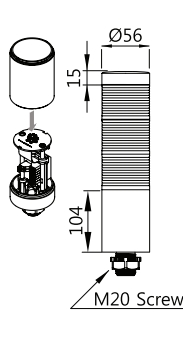


Dome Head Modules



Surface Mounting

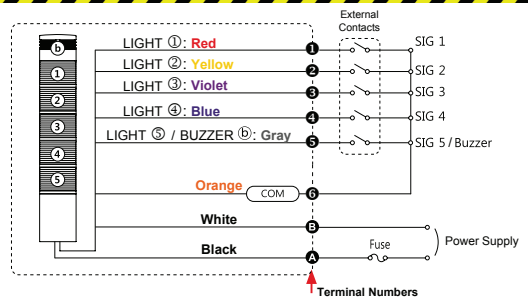
PTE-TC-□□



Wiring Diagram

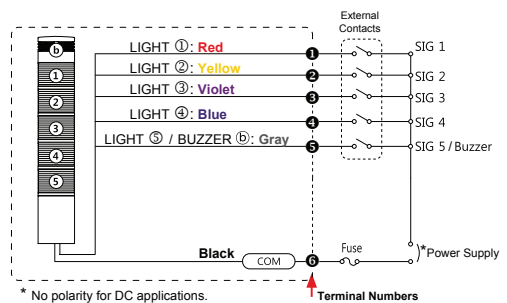
AC 90~240V Steady Lights

PTE-A-FF PTE-S-FF



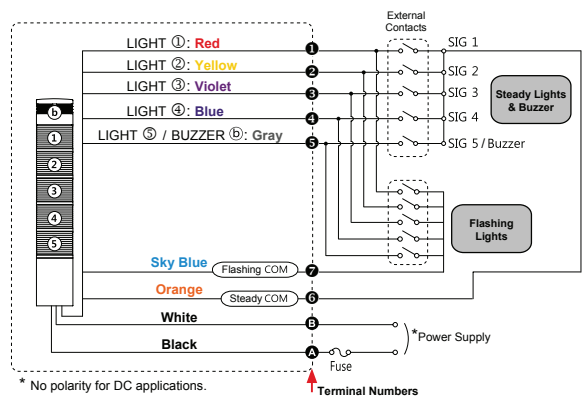
DC/AC 24V Steady Lights

PTE-A-02 PTE-S-02

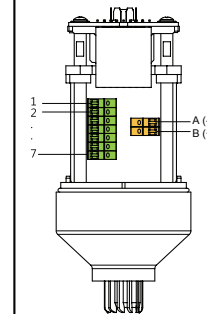


AC 90~240V DC/AC 24V Steady & Flashing Lights

PTE-AF-02 PTE-AF-FF
PTE-SF-02 PTE-SF-FF
PTE-TP-02 PTE-TP-FF



Terminal Connections

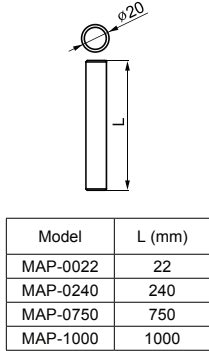


PIN #	Description
1	Light 1
2	Light 2
3	Light 3
4	Light 4
5	Light 5 or Buzzer
6	Steady COM
7	Flashing COM
A	Power Supply (-)
B	Power Supply (+)

Accessories

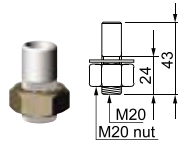
Mounting Poles

MAP-0022
MAP-0240
MAP-0750
MAP-1000

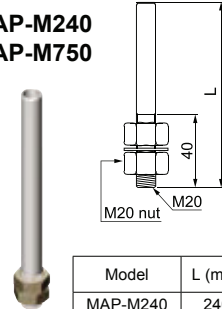


Threaded Poles

MAP-M043



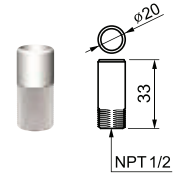
MAP-M240
MAP-M750



Model	L (mm)
MAP-M240	240
MAP-M750	750

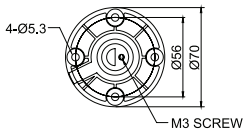
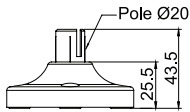
NPT Adaptor

MAP-NPT1/2

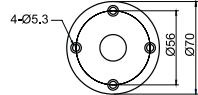
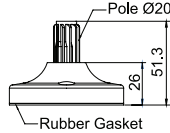


Mounting Bases

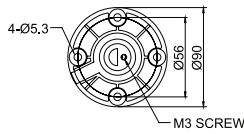
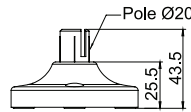
MAM-B070



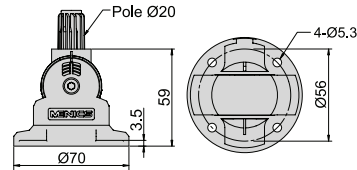
MAM-B070D



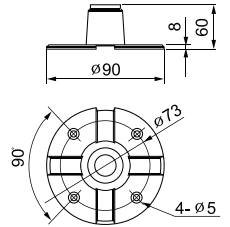
MAM-B090



MAM-B070R

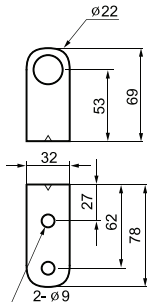
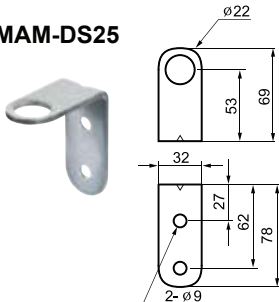


MAM-DS23-20

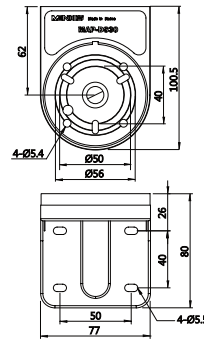


Wall Mount Brackets

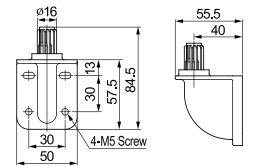
MAM-DS25



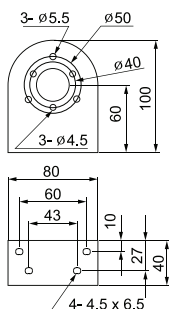
MAP-DS30



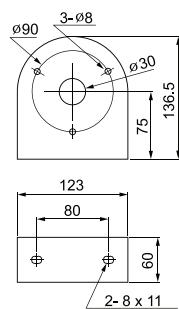
MAP-DS40



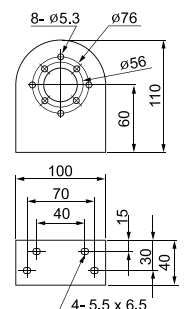
MAM-DS26



MAM-DS27



MAM-DS28



Additional products to achieve your **Total Safety Solution!!!**

- Safety Light Curtains (All Types and Styles)
- Universal Safety Controller HUB / Safety PLC
- Safety Mat Systems and Controls
 - Area Guarding Systems
 - NSD Safety Mat Systems
 - STTS Safety Mat Systems
 - Direction of Travel Mats
 - High-Temp Welding Mats
- Ergonomic Palm Buttons
 - UltraTouch Palm Buttons
- Safety Interlock Switches (including explosion proof)
- Customized "control reliable" controls for dual solenoid activated pneumatic and hydraulic valve applications
- Fencing with Interlocks
- E-Stop Buttons
- Stack Lights

- Energy Isolation and Single Point Lockout Systems
- Plant Surveys, Risk Assessment & Installation Services
- Customized Control Panels; Stainless Steel enclosures available for all products

Punch Press / Metal Stamping Industry

- Resolver or Rotary Cam Based Clutch / Brake Controls - OSHA/ANSI Compliant
- Punch Press Automation Controllers
- Time-Based Brake Monitors
- Programmable Limit Switches
- Die Protection & Tonnage Monitoring Systems
- Servo Feed Interfaces

Press Brake Guarding and Controls

- Press Brake Guarding for Mechanical, Air Clutch and Hydraulic Press Brakes
- Press Brake Control Systems



PINNACLE

S Y S T E M S , I N C .

www.pinnaclesystems.com

Sales and Marketing Office

P.O. Box 100088
Pittsburgh, PA 15233

Toll Free: (800) 569-7697
Phone: (412) 262-3950
Fax: (412) 262-4055
sales@pinnaclesystems.com

Manufacturing and Service Center

3715 Swenson Avenue
Saint Charles, IL 60174

Phone: (630) 443-9320
Fax: (630) 443-9346
service@pinnaclesystems.com

We have designed our equipment to the very highest performance and safety standards known to the current technological state of the art, as evidenced by our U.S.A. and foreign patents issued and pending. However, the installation, usage, and suitability, and fitness of our equipment for any purpose, known or unknown, is interdependent upon the performance of other equipment not manufactured, installed, secured or maintained by Pinnacle Systems, Inc.

We cannot and do not accept responsibility for any overall system performance when factors such as these, are beyond our control.